



## Year 6

Year 6 went out on the first school trip of the year this week. They visited the Royal Gunpowder Mills at Waltham Abbey to find out more about what it was like during Victorian times. The children took part in a workshop as well as having a tour of the Mill. **Thank you to the parents who joined the children on the trip - your help makes it possible.**

In Assembly this week, we thought about **respecting the learning process**. Learning something new can be fun and exciting but also tricky and make us feel worried or uncertain. These feelings can sometimes make us want to stop or take an easier option, but if we persevere, then we can have fantastic feelings of pride at keeping going, challenging ourselves and being successful.

## Reception

Reception have done so well in their first full week! The first few weeks of school are focused on building strong relationships with the adults and with each other and adapting to new routines and they have done really well.

**Please note:** we will be holding a curriculum meeting for parents of children in Reception on Tuesday, 8th October at 7 pm (it should last about one hour). We will share how we will be teaching phonics, early reading and early maths and how you can support at home. This is for adults only. Afterwards, FOMS will be hosting a Reception Social event from 8pm to 9pm. which will be a chance to meet each other in a more relaxed environment. We hope you are able to join us.

## Year 1

The children have been reading Beegu and drawing their own story maps. In Maths the children have been counting backwards. A phonics newsletter for this week has also been shared alongside this newsletter so you can support their learning at home.

## Year 3

In Year 3, the children have been researching predators for their non-chronological reports about sharks. The children have also been finding out about skeletons and why we need a skeleton. They have also been reading their class text, the fantastic Krindlekrax!

## Parking and Driving

Please remember that our neighbours need to be able to access their homes in the morning and the afternoon and have their bins emptied. Parking in a way that stops this is antisocial and causes unnecessary stress and frustration for other parents and neighbours.

The countdown is on...tomorrow Mr Powell, Miss Pierides and Mr Filby will be running the rather gruelling Tough Mudder race in aid of a very worthy, local cause: Noah's Ark Children's Hospice. If you would feel like donating, we would be delighted! The link is:  
<https://www.paypal.com/pools/c/97Ktf4GZ5N>  
 Thanks very much!

# TOUGH MUDDER CHALLENGE



## Year 2

Year 2 have been tasting muffins as part of their Design and Technology lessons. and thinking about healthy eating in PSHE. They have also started reading the text, The Incredible Book Eating Boy by Oliver Jeffers. They then acted out scenes from the book.



## Year 4

In their Science lessons this week the children have been learning about how particles are arranged in solids, liquids and gases. In Design and Technology, they have been taste testing jam tarts!

## Year 5

In Science the children have been continuing their observations of their caterpillars as well as learning about the life cycles of amphibians.

## Barnet and Education Learning Service (BELS) Autism Parent/Carer Programme

Professionals and parents will deliver modules designed to increase your knowledge and skills with understanding Autism and using practical strategies to support your child.

The criteria for accessing the programme:

- Barnet Resident
- Child has a diagnosis of Autism
- Child is 0-6 years old

There is also other support for parents at :

[https://www.barnetlocaloffer.org.uk/parent\\_zone](https://www.barnetlocaloffer.org.uk/parent_zone)



### BELS Autism Parent/Carer programme (0-6yrs)

Programme Content	
<p><b>1. Feeding</b></p> <ul style="list-style-type: none"> <li>Understanding of development of feeding skills.</li> <li>Strategies for promoting using the table at home.</li> </ul> <p>Professionals: SENAd &amp; parent</p> <p>Wednesday September 18<sup>th</sup></p>	<p><b>2. Understanding Sensory Processing</b></p> <ul style="list-style-type: none"> <li>Understanding of our 5 senses and 3 hidden senses.</li> <li>Practical strategies to promote awareness and calm.</li> </ul> <p>Professionals: Occupational Therapist</p> <p>Wednesday September 25<sup>th</sup></p>
<p><b>3. Promoting Communication and communication</b></p> <ul style="list-style-type: none"> <li>Strategies for promoting this in the home.</li> </ul> <p>Professionals: Speech Therapist</p> <p>Wednesday October 2<sup>nd</sup></p>	<p><b>4. Introduction to Autism</b></p> <ul style="list-style-type: none"> <li>What is autism?</li> <li>Autism and early education.</li> <li>Autistic voice.</li> <li>Strategies for support.</li> </ul> <p>Professionals: SENAd</p> <p>Wednesday October 9<sup>th</sup></p>
<p><b>5. Environment Regulation and Promoting Predictability</b></p> <ul style="list-style-type: none"> <li>Use of visuals and other strategies for setting up routines in the home, managing changes and transitions.</li> <li>Enhancing predictability as a way to support emotional regulation.</li> </ul> <p>Professionals: SENAd &amp; parent</p> <p>Wednesday October 16<sup>th</sup></p>	<p><b>6. Sleep</b></p> <ul style="list-style-type: none"> <li>Understanding how to improve sleep.</li> <li>Practical strategies to promote good bedtime routines.</li> </ul> <p>Professionals: SENAd &amp; parent</p> <p>Wednesday November 6<sup>th</sup></p>
<p><b>7. Eating and Drinking Difficulties</b></p> <ul style="list-style-type: none"> <li>Understanding of development of eating and drinking skills.</li> <li>Practical strategies to use at home.</li> </ul> <p>Professionals: Occupational Therapist &amp; Speech Therapist</p> <p>Wednesday November 13<sup>th</sup></p>	<p><b>8. Understanding Education Health and Care Plans</b></p> <ul style="list-style-type: none"> <li>What is an EHCP?</li> <li>How can an EHCP help my child?</li> <li>How long the process takes?</li> <li>Who can help?</li> </ul> <p>Professionals: SENAd/SENCO</p> <p>Wednesday November 20<sup>th</sup></p>

**BELS Autism Parent/Carer Programme**

Professionals and parents will deliver modules designed to increase your knowledge and skills with understanding Autism and using practical strategies to support your child.

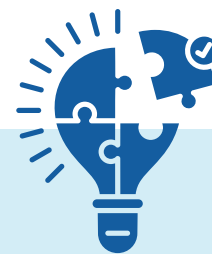
The criteria for accessing the programme:

- Barnet Resident
- Child has a diagnosis of Autism
- Child is 0-6 years old

To register [click here](#) or scan QR code.

All sessions will be on Zoom. [Click here for session information](#)

**BELS**  
Barnet Education & Learning Service



## SENDIASS

Barnet SENDIASS is pleased to announce an online information session for Barnet resident parents/carers of children and young people with special educational needs or disability. The session will also be relevant to those who are not Barnet residents but where the children or young people attend a Barnet setting.

This is a free event hosted by Barnet Inclusion Advisory Team who will be giving a short presentation on what is ordinarily available in schools and there will be an opportunity to ask general questions.

Please note, this session will be a repeat of the in-person session delivered in February 2024

- Date: Tuesday 8 October 2024
- Time: 10am to 12.30pm
- Location: Online via MS Teams
- Presenters: Barnet Inclusion Advisory Team (IAT)
- Theme: What is Ordinarily Available? - A guide to the provision that should be ordinarily available in state funded schools in Barnet.

To register please click [here](#). If you have any questions, please contact: [sendiass@barnet.gov.uk](mailto:sendiass@barnet.gov.uk)

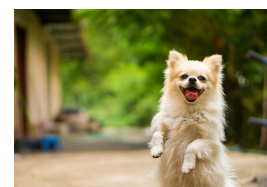
### **Barnet Family services in conjunction with Resources for Autism are in the early stages of creating a Family hub for children and young people pre and post autism diagnosis.**

The hub will be a one stop community hub to offer support to parents/carers with navigating the health social care and education pathways. The hub is intended to provide social opportunities for parents and children, ensuring relevant training and support is available from early years through to adolescence.

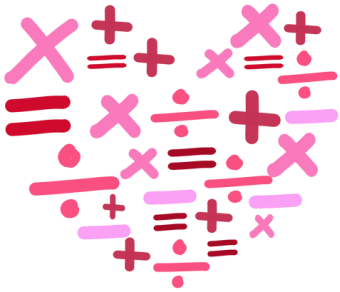
There will be social activities/clubs accessible to children and young people, with signposting and advice provided alongside. The hub will be multi agency and provide an array of drop ins and support to families.

They have devised a survey and are keen to hear from parents/carers whose children are pre-diagnosis around the services and support they feel they need from the hub.

Please see below link for the pre diagnosis survey:  
<https://www.surveymonkey.com/r/3VVYXML>



A polite reminder not to bring your dog on to the playground at the end of the day.



# Times Tables (Year 3-6)

The National Curriculum expects that most children will know all the multiplication and division facts by the end of Year 4. In June, children in Year 4 take the government's Multiplication Screening Check, which is an online test to check whether they know their times tables.

All children practise their times tables in maths lessons from Year 1 and this is supplemented by short weekly tests. These tests are just one in a number of ways that we work on this objective. We also value all the effort that so many parents put in to helping with remembering these all important facts.

There is a lot of debate about whether children need to 'know' their times tables and whether quick recall is really necessary. Our aim as a school is to make sure that children are confident and have committed their times tables to their long term memory. By doing this, they can spend less time and effort on working out the calculation and more on using their times table knowledge to solve more complex problems. It reduces the demand on their working memory.

It is also important to remember that whilst some children can learn times tables very quickly, it can take other children a little bit longer. There is no pressure from teachers about 'passing the test', but a focus on trying your best and doing a bit better each week.

The weekly tests in Key Stage 2 are 5 minutes and focus on both multiplication and division facts e.g.  $6 \times 2 = 12$ ,  $2 \times 6 = 12$ ,  $12 \div 2 = 6$ ,  $12 \div 6 = 2$ .

At the start of the year, children will be asked to warm-up by having a go at a test they have previously passed. If they have already earned all their badges, they will do other activities related to times tables to practice applying their knowledge.

Times tables tests will be introduced to Key Stage 1 later in the year when this part of the curriculum is covered. There will be more in the newsletter in the Spring Term about this. By the end of Year 2 children need to know the multiplication and division facts for at least the 2, 5 and 10 times tables.

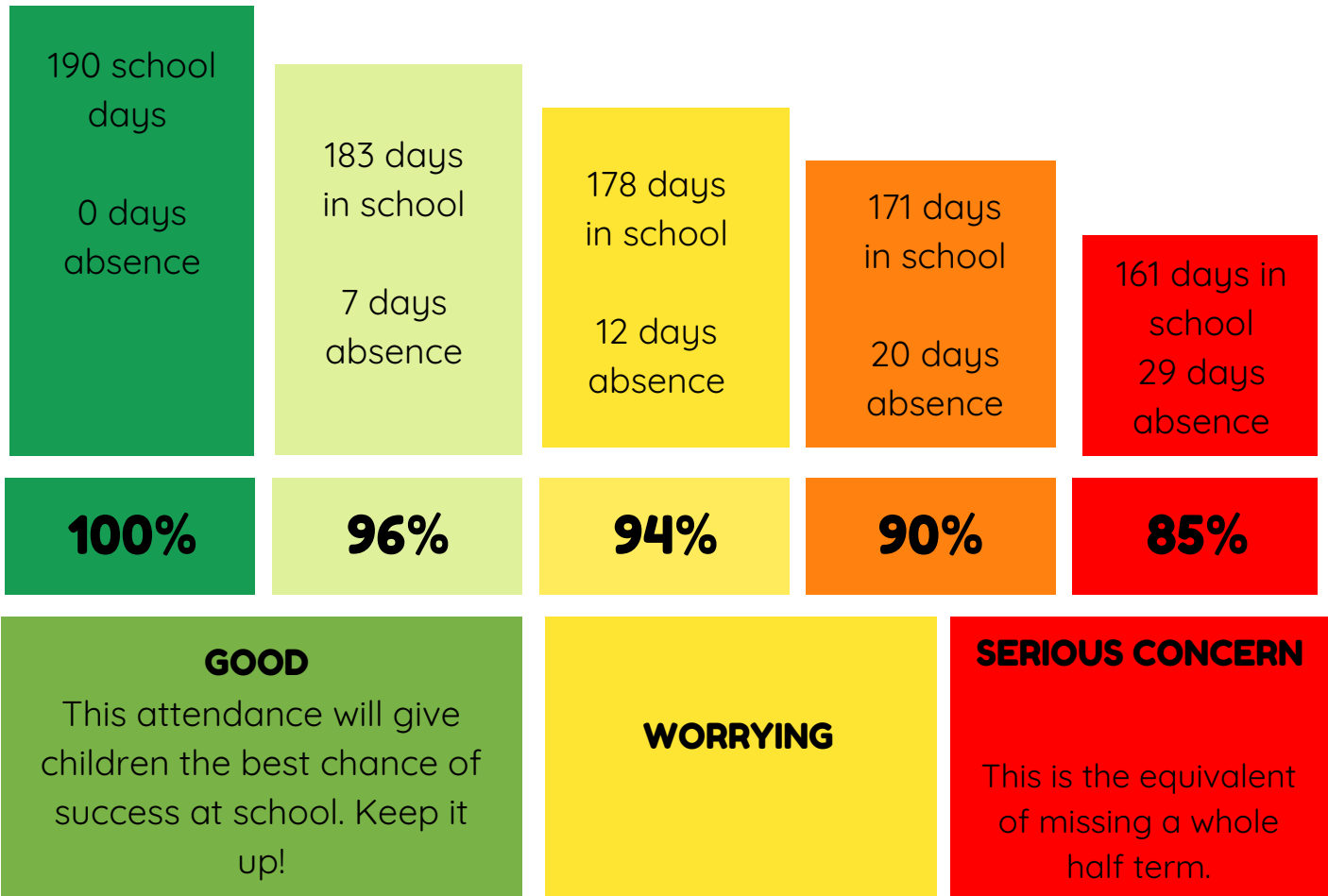
Tests	Times tables to practise	Badge
1 - 3a	2, 3, 5, 10	Blue Star
4 - 6a	2, 3, 4, 5, 8, 10	Silver Star
7 - 9	2, 3, 4, 5, 6, 7, 8, 9, 10	Gold Star
10 - 12	1-12 (including decimals)	Platinum

# EVERY SCHOOL DAY COUNTS

365 DAYS IN A CALENDAR YEAR

175

There are 175 non-schol days during the year to spend on family time, visits, holidays, shopping, household jobs and appointments.



## Attendance this week

Oak	96%	2M	96%	5S	99%
Willow	94%	3D	98%	5LD	94%
1C	99%	3F	99%	6P	94%
1K	100%	4B	97%	6K	97%
2CW	98%	4P	97%	Whole School	98%

# Dates for 2024/5

October - Black History Month 'Reclaiming Narratives'

2nd October to 4th October - Year 5 to Kingswood

7th October - Year 6 Bikeability

8th October - Curriculum Meeting for EYFS parents (Phonics and Maths) 7pm and **FOMS Reception Social.**

18th October - **Show Racism the Red Card** (children to wear red)

21st/22nd October - Parent Consultations

Friday 25th - Last Day of Autumn 1 (normal finish time). Flu Vaccinations

Monday 28th October to Friday 1st November - HALF TERM

Monday 4th November - First Day back

4th November to 15th November - Year 5 Swimming Block

8th November - Individual/Sibling Photos

12th and 13th December - Reception Nativity (9.30am)

16th December - Year 2 to Christ Church

Friday 20th December - Last Day of Autumn Term (2pm finish)

## Spring Term 2025

Monday 6th January - First Day back of Spring Term

Friday 14th February - Last Day of Spring 2 (normal finish time)

Monday 17th February to Friday 21st February - HALF TERM

Monday 24th February - First Day back of Spring 2

Friday 4th April - Last day of Spring Term (2pm finish)

## Summer Term 2025

Tuesday 22nd April - First Day of Summer Term

Thursday 8th May to 9th May - Year 4 to Phasels Wood

12th May - Year 6 SATS week

18th May - 23rd May - Year 6 to the Isle of Wight

Friday 23rd May - Last day of Summer 1 (normal finish)

Monday 26th May to Friday 30th May - HALF TERM

Monday 2nd June - INSET Day

Tuesday 3rd June - First Day of Summer 2

Friday 4th July - INSET Day

Friday 18th July - Last Day of Term for pupils 2pm finish

Monday 21st July and Tuesday 22nd July - INSET Days